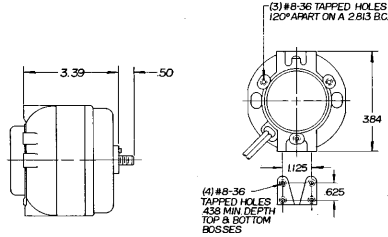
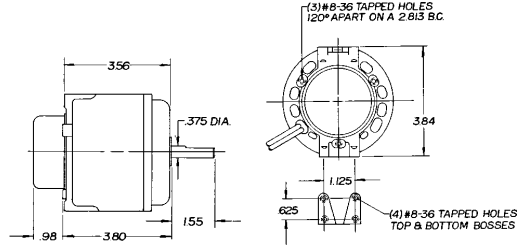


**16-25-35 WATT (1/50 to 1/20 Hp)**  
**High Efficiency**  
**Cast Iron, Unit Bearing**  
**Fan Motors**

- Horizontal and Shaft Up mounting only



**50-75 WATT (1/15 Hp)**  
**High Efficiency**  
**Cast Iron, Unit Bearing**  
**Fan Motors**



Universal Stock No.	A.O. Smith Stock No.	Watt Output	Rot.*	Volts	Amps	RPM	Shaft Diameter & Length	EMS Number	OEM Part Number	Notes
277		15	CCW	115	.60	1500	5/16 x 7	ESPOL15EMJR11	24-0366	1
292		15	CCW	115	.60	1500	5/16 x 5	ESPL15EMJR1B2		
293		15	CCW	115	.60	1500	5/16 x 7THD	ESPL15EMJR1B1		
294		15	CCW	115	.60	1500	5/16 x 5THD	ESPL15EMJR1		
295		15	CCW	115	.60	1500	5/16 x 7	ESPL15EMJR1B3		
296		15	CCW	115	.60	1500	5/16 x 9	ESPL15EMJR17		3
246	UB16CWL	16	CW	115	.80	1500	1/4 x 20THD	ESPL16EM1		4
247	UB16CCL	16	CCW	115	.80	1500	1/4 x 20THD	ESPL16EMR1		4
248	UB16CWH	16	CW	230	.40	1500	1/4 x 20THD	ESPL16EM2		4
249	UB16CCH	16	CCW	230	.40	1500	1/4 x 20THD	ESPL16EMR2		4
297		25	CCW	115	1.1	1550	5/16 x 7	ESPL25MJR1B1		3
299		25	CCW	115	1.1	1500	8-1/8 x 5/16 x 1/2	ESPOL25MVRD12		
250	UB25CWL	25	CW	115	1.1	1500	1/4 x 20THD	ESPL25EM1		4
251	UB25CCL	25	CCW	115	1.1	1500	1/4 x 20THD	ESPL25EMR1		4
252	UB25CWH	25	CW	230	.60	1500	1/4 x 20THD	ESPL25EM2		4
253	UB25CCH	25	CCW	230	.60	1500	1/4 x 20THD	ESPL25EMR2		4
254	UB35CWL	35	CW	115	1.4	1500	1/4 x 20THD	ESPL35EM1	810M035A29	4
255	UB35CCL	35	CCW	115	1.4	1500	1/4 x 20THD	ESPL35EMR1		4
256	UB35CWH	35	CW	230	.70	1500	1/4 x 20THD	ESPL35EM2	810M035A21 & A28	4
257	UB35CCH	35	CCW	230	.70	1500	1/4 x 20THD	ESPL35EMR2		4
258	UB50CWL	50	CW	115	1.7	1500	3/8 x 1-1/2	ESPOL50EM1	050-0244-01	4
291		50	CW	115	1.7	1500	5/16 x 3	ESPOL50EM1B1	134350000	
259	UB50CCL	50	CCW	115	1.7	1500	3/8 x 1-1/2	ESPOL50EMR1		4
289		50	CW	115	1.7	1500	3/8 x 1-1/2	ESPOL50EM13	998-1008-00	1,2
260	UB50CWH	50	CW	230	.85	1500	3/8 x 1-1/2	ESPOL50EM2	050-0244-00	4
9200		50	CW	208-230	1.2	1500	3/8 x 1-1/4	ESPOL60EM2		
261	UB50CCH	50	CCW	230	.85	1500	3/8 x 1-1/2	ESPOL50EMR2		4
276	UB50CCHJA	50	CCW	230	.85	1500	5/16 x 2-1/2	ESPOL50EMJR21	810M050A62	1,4
278		25	CCW	115	1.1	1500	3/12 x 5/16 x 1	ESPL25ERD1	SPL25E	1
285	UB50CWHA	50	CW	230	.85	1500	5/16 x 1-1/2	ESPOL50EM2B		1,4
288		50	CW	230	.85	1500	3/8 x 1-1/2	ESPOL50EM26	998-1007-00	1,2
290		50	CW	460	.44	1500	3/8 x 1-1/2	ESPOL50EM461	050-0244-02	
298		75	CW	230	1.5	1500	3/8 x 1-1/2	ESPOL75EM2		

Notes:  
 1. Special OEM Replacement Motor (See Page 11-15)  
 2. Includes Mounting Bracket and Shaft Bushing  
 3. Pin Hole  
 4. Items with Universal and A.O. Smith stock numbers and same specifications are identical. **The A.O. Smith stock number will be discontinued when stock is depleted.**  
 \*Rotation Determined by Viewing Lead End  
 See Page 150 for Parts & Accessories