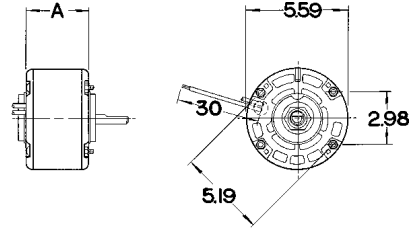


Heating & Air Conditioning

Shaded Pole – 60 Hz – Thermally Protected, Continuous Duty, Air Over, Sleeve Bearing – Mechanically Reversible

OEM replacement for Lennox, Luxaire, Chrysler, Johnson, Armstrong, Heil Quaker, Miller, Lear Siegler, Tappan, Modernaire and other air conditioning and heating applications.

Applications: Direct Drive Blowers • Condenser Fans



146, 480, 481, 494,
495, 687 (Duo Therm)



147, 446



144



153 TE (Johnson)

Stock No.							Shaft Diameter & Length	Iron Stack	Connection Diagram No.*	Notes
CWSE	Hp	Volts	RPM	Amps	Speeds	"A"				
687	1/12	115	750	5.2	1	3-1/2	1/2 x 3-1/2	1		1,2,3
153	1/8	115	1050	3.5	1	4	1/2 x 3	1-1/2		2
480	1/8	115	1050	4.3	1	3-3/4	1/2 x 4	1-1/4		1
146	1/6	115	1050	7.0	1	4	1/2 x 4	1-1/4		1
494	1/6	208-230	1050	3.3	1	4	1/2 x 4	1-1/4		1
446	1/6-1/8	208-230	1050	3.0-1.9	2	3-3/4	1/2 x 4	1-1/4	7u	1
147	1/5-1/7-1/10	115	1050	7.5-4.9-3.5	3	3-3/4	1/2 x 4	1-1/4	8u	1
481	1/4	115	1050	9.0	1	4-1/4	1/2 x 4	1-3/4		1
495	1/4	208-230	1050	4.5	1	4-1/4	1/2 x 4	1-3/4		1
144	1/4-1/5-1/6-1/8	115	1050	7.6-5.8-4.7-3.7	4	4-1/4	1/2 x 6-1/2	1-3/4	9u	1

Air Conditioners – Adapt-A-Lug® Motors

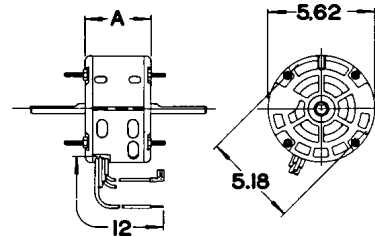
Shaded Pole – 60 Hz – Thermally Protected – Continuous Duty, Air Over

OEM replacement for Fedders, Chrysler, Whirlpool, Emerson, Quiet Kool, Westinghouse, Tappan and similar applications.

Lugs available separately – See page 156



143



Stock No.	Hp	Volts	RPM	Amps	Speeds	Capacitor	"A"	Shaft Diameter & Length	Iron Stack	Connection Diagram No.*	Notes
143	1/6-1/8-1/10	208-230	1050	2.7-2.2-1.8	3	SHADED POLE	4	8-1/2 x 1/2 x 7-1/2	1-1/2	8u	4

Notes:

1. Resilient Mounting Rings Included
 2. Special OEM Replacement Motor (See Pages 97-122)
 3. Supplied with Lead & Plug Assembly
 4. Mounting Accessories Packaged with Motor
- *See Pages 160-163 for Connection Diagram