

Hubless Fan (2-16 Watt) Motors — Totally Enclosed

Shaded Pole & PSC — 60/50 Hz — Continuous Duty, Air Over — Aluminum & Cast Iron

OEM replacement for: Hussman, Sears, Whirlpool, Gibson, Tyler, So-Low, Copeland, Borgen, Barker, Hill/Phoenix, Masterbilt, Frigo Pac and similar applications.

Features

- 2-Side Mounting Bosses
- 115 & 230 Volt
- Aluminum & Cast Iron
- UL & CSA Approved
- 22" Leads
- All Models Include Vibration Dampening Hub Washer, Speed Nut and 4 Mounting Screw

Applications

- Condensing Units
- Refrigerated Display Cases
- Evaporative Coolers
- Walk-in Coolers
- Vending Machines
- Exhaust Fans
- Blower & Fans
- Replaces Standard Unit Bearing Motors
- Used with 6" to 10" Hubless Fan Blades (See page 150)



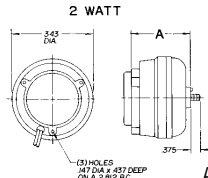
ALUMINUM 2W



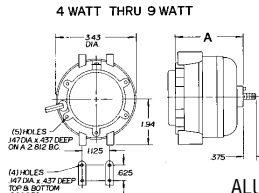
ALUMINUM 4-9W



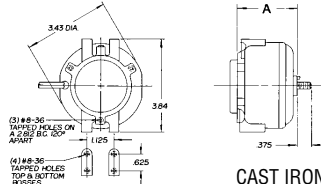
CAST IRON 2-16W



ALUMINUM



ALUMINUM



CAST IRON

S.P. ALUMINUM CONSTRUCTION — 5 REAR MOUNTING HOLES (2W-3 HOLES)

Watts Output	Universal Stock No.	Equivalent	Volts	RPM	Amps	Rotation	"A"	Number of Side Bosses	Industry No.	Notes
2	220	UB02CWLA	115	1550	0.16	CWLE	2.53	None	5109	
4	221	UB04CWLA	115	1550	0.27	CWLE	2.53	2	5213	
4	222	UB04CCLA	115	1550	0.27	CCWLE	2.53	2	5214	
4	223		230	1550	0.13	CWLE	2.53	2	5223	
4	224		230	1550	0.13	CCWLE	2.53	2	5224	
6	225	UB06CWLA	115	1550	0.36	CWLE	2.78	2	5313	
6	226	UB06CCLA	115	1550	0.36	CCWLE	2.78	2	5314	
9	227	UB09CWLA	115	1550	0.58	CWLE	2.78	2	5413	
9	228	UB09CCLA	115	1550	0.58	CCWLE	2.78	2	5414	
9	229	UB09CWH	230	1550	0.29	CWLE	2.78	2	5423	
9	230	UB09CCHA	230	1550	0.29	CCWLE	2.78	2	5424	

S.P. CAST IRON CONSTRUCTION — 3 REAR MOUNTING HOLES

Watts Output	Universal Stock No.	Equivalent	Volts	RPM	Amps	Rotation	"A"	Number of Side Bosses	Industry No.	Notes
2	231		115	1550	0.16	CWLE	2.53	2	5109	
4	232	UB04CWL	115	1550	0.27	CWLE	2.53	2	5211	
4	233	UB04CCL	115	1550	0.27	CCWLE	2.53	2	5212	
4	234	UB04CWH	230	1550	0.13	CWLE	2.53	2	5221	
4	235	UB04CCH	230	1550	0.13	CCWLE	2.53	2	5222	
5	287		115	1550	0.45	CWLE	2.50	2		
6	236	UB06CWL	115	1550	0.36	CWLE	2.78	2	5311	
6	237	UB06CCL	115	1550	0.36	CCWLE	2.78	2	5312	
9	238	UB09CWL	115	1550	0.58	CWLE	2.78	2	5411	
9	239	UB09CCL	115	1550	0.58	CCWLE	2.78	2	5412	
9	240	UB09CWH	230	1550	0.29	CWLE	2.78	2	5421	
9	241	UB09CCH	230	1550	0.29	CCWLE	2.78	2	5422	
16	242	UB16CWLV1	115	1550	0.82	CWLE	3.06	2	5811	
16	243	UB16CCLV1	115	1550	0.82	CCWLE	3.06	2	5812	
16	244	UB16CWHV1	230	1550	0.41	CWLE	3.06	2	5821	
16	245	UB16CCHV1	230	1550	0.41	CCWLE	3.06	2	5822	

PSC CAST IRON CONSTRUCTION — 3 REAR MOUNTING HOLES

Watts Output	Universal Stock No.	Volts	RPM	Amps	Rotation	"A"	Number of Side Bosses	Notes
4	9204	115	1550	0.12	CWLE	2.53	2	
5	9205	115	1550	0.15	CWLE	2.53	2	
6	9206	115	1550	0.13	CWLE	2.78	2	
9	9209	115	1550	0.23	CWLE	2.78	2	

Notes:

See page 150 for Parts & Accessories